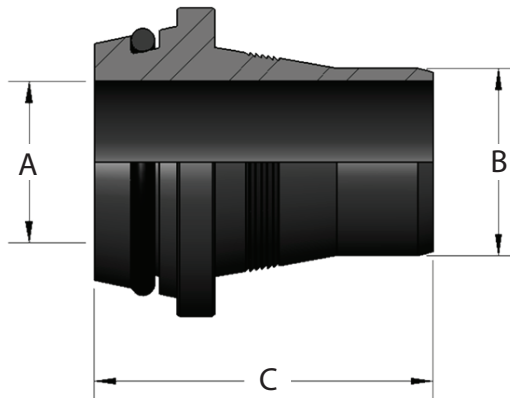
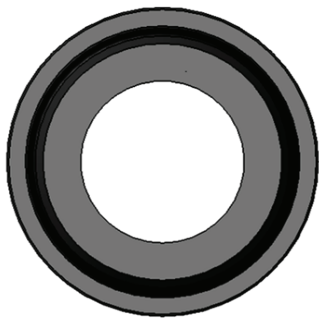


The BARDKO® flared joint is based on flaring the tube ends to 10 degrees with two internal cones. Both cones have an O-ring.

The connection is made by cold cutting the pipe square, deburring it, and slipping on a tube nut before the pipe is flared. After flaring, the cone is secured into the tube by way of an interference fit. In fact, the cone may be used up to three times to flare the tube. By flaring the tube with the cone, you can be sure of a sealed joint every time. Once the nut and cone have been installed, the joint is ready for installation to the tube adapter.

Our standard connection style conforms to SAE, BSP, BSPP, METRIC and NPT. The BARDKO® connection has only one method of attaching the tube nuts to the tube which is by a 10-degree flare. The cone flares the tube 10 degrees regardless of the system pressure or the tube size. All tube sizes and wall thicknesses are flared the same way.

# BARDKO® CONES



## DKO Taper Cone (S Series)

Tube Size (OD x WT)	Part #	Fitting Size	Working Press. (PSI)	Metric Dimensions (mm)			Weight (lbs/ea)
				A	B	C	
8 x 1,5	BHKO-CS-8X1.5**	8 S	9,135	4,0	5,2	20,0	0.01
10 x 1,5	BHKO-CS-10X1.5**	10 S	9,135	5,5	7,2	21,0	0.01
12 x 2	BHKO-CS-12X2**	12 S	9,135	6,5	8,2	22,5	0.02
16 x 2	BHKO-CS-16X2**	16 S	5,800	10,5	12,3	26,5	0.03
20 x 3	BHKO-CS-20X3**	20 S	5,800	12,5	14,3	32,0	0.07
25 x 3	BHKO-CS-25X3**	25 S	5,800	17,0	19,3	34,5	0.10
30 x 4	BHKO-CS-30X4**	30 S	5,800	20,0	22,3	34,5	0.14
38 x 5	BHKO-CS-38X5**	38 S	4,560	25,0	28,3	38,0	0.23

\*\* Specify material: CS = Carbon Steel, SS = Stainless Steel

BAR FLARE  
SYSTEM

PIPE & TUBE

CLAMPS

VALVES

ADAPTERS

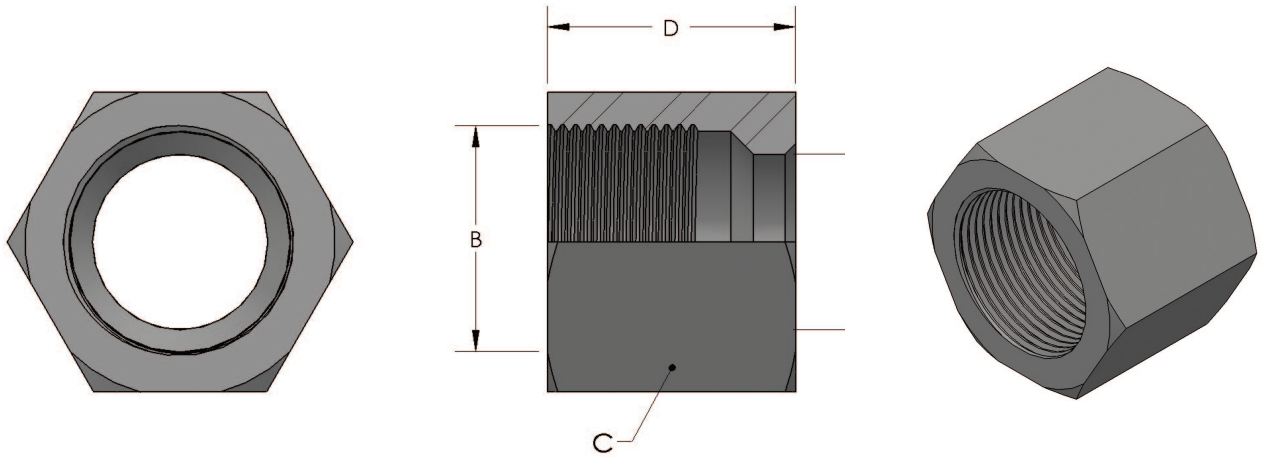
HOSES &  
COUPLINGS

O-RINGS

BLOCKS

TOOLING

# BARDKO® TUBE NUT



## DKO Union Nut (S Series)

Tube OD A	Part #	Fitting Size	Working Press. (PSI)	Metric Dimensions (mm)			Weight (lbs/ea)
				B	C	D	
8	BHKO-NS-8**	8 S	9,135	M16 x 1,5	19,0	20,0	0.09
10	BHKO-NS-10**	10 S	9,135	M18 x 1,5	22,0	21,5	0.10
12	BHKO-NS-12**	12 S	9,135	M20 x 1,5	24,0	21,5	0.12
16	BHKO-NS-16**	16 S	5,800	M24 x 1,5	30,0	26,0	0.20
20	BHKO-NS-20**	20 S	5,800	M30 x 2,0	36,0	30,5	0.25
25	BHKO-NS-25**	25 S	5,800	M36 x 2,0	46,0	38,0	0.40
30	BHKO-NS-30**	30 S	5,800	M42 x 2,0	50,0	39,0	0.64
38	BHKO-NS-38**	38 S	4,560	M52 x 2,0	60,0	46,0	1.00

\*\* Specify material: CS = Carbon Steel, SS = Stainless Steel

BAR FLARE  
SYSTEM

PIPE & TUBE

CLAMPS

VALVES

ADAPTERS

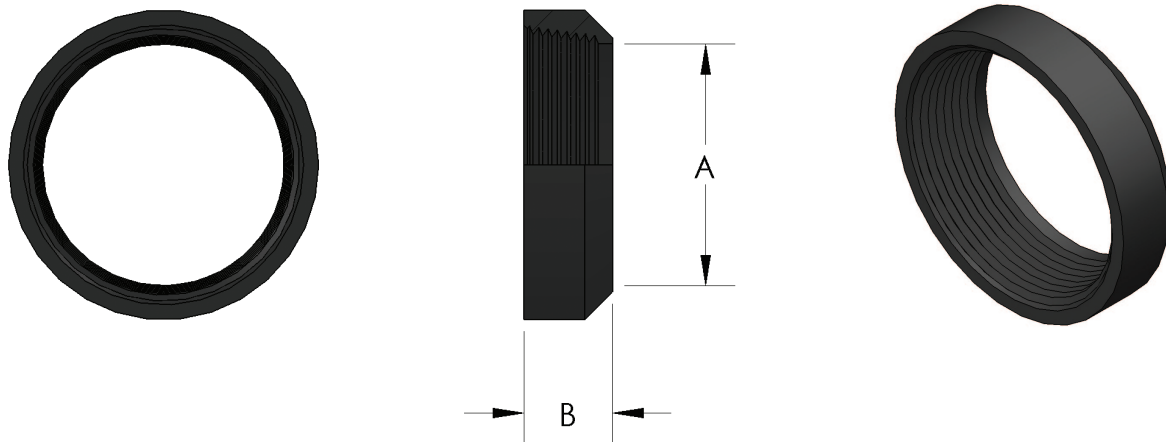
HOSES &  
COUPLINGS

O-RINGS

BLOCKS

TOOLING

# BARDKO® BACKUP RING



**DKO Backup Ring (S Series)**

Tube OD A	Part #	Working Press. (PSI)	B (mm)	Weight (lbs/ea)
8	BHKO-RS-8**	9,135	4,5	0.005
10	BHKO-RS-10**	9,135	4,5	0.007
12	BHKO-RS-12**	9,135	4,5	0.008
16	BHKO-RS-16**	5,800	6,5	0.012
20	BHKO-RS-20**	5,800	9,0	0.024
25	BHKO-RS-25**	5,800	10,0	0.048
30	BHKO-RS-30**	5,800	10,0	0.055
38	BHKO-RS-38**	4,560	13,5	0.123

\*\* Specify material: CS = Carbon Steel, SS = Stainless Steel

# NOTES

BAR FLARE  
SYSTEM

PIPE & TUBE

CLAMPS

VALVES

ADAPTERS

HOSES &  
COUPLINGS

O-RINGS

BLOCKS

TOOLING